

1. Scope

This specification applies to the working devices (ladders) used on District steel poles.

2. Reference Standards

Unless otherwise stated in this specification, working devices shall comply with the latest revisions of the following standards:

ASTM A-123 - Standard Specification for Zinc (Hot-Dip Galvanized) Coatings on Iron and Steel Products

ASTM A-153 - Standard Specification for Zinc Coating (Hot-Dip) on Iron and Steel Hardware

3. Material ID Numbers

This specification applies to the following District Material ID Numbers:

Cat. ID	Description
741266	Working Device for Steel Structure
741274	Working Device with Standoff Bracket for DBI/SALA Fall Restraint System Top or Bottom Brackets
741282	Working Device with Standoff Bracket for DBI/SALA Fall Restraint System Cable Guide

4. Construction

4.1 Materials

Working devices shall be constructed from materials as shown in the attached drawings. All steel must be grade listed or equivalent.

4.2 Finish

After assembly of parts A-E, the unit shall be hot dip galvanized per ASTM A-123 and A-153. Climbing/working steps part G and 3/8" bolts part F shall be hot dip galvanized per ASTM A-123 and A-153 Class C.

For Cat. ID's 741274 and 741282, the additional brackets must be attached to the unit before galvanizing.

4.3 Strength Ratings

The minimum vertical loading strengths shall be 1500 lbs for step buttons and 2000 lb for the device itself.

4.4 Tap Requirements

Tap all holes 1/64" oversize, retap 1/64" oversize after galvanizing.

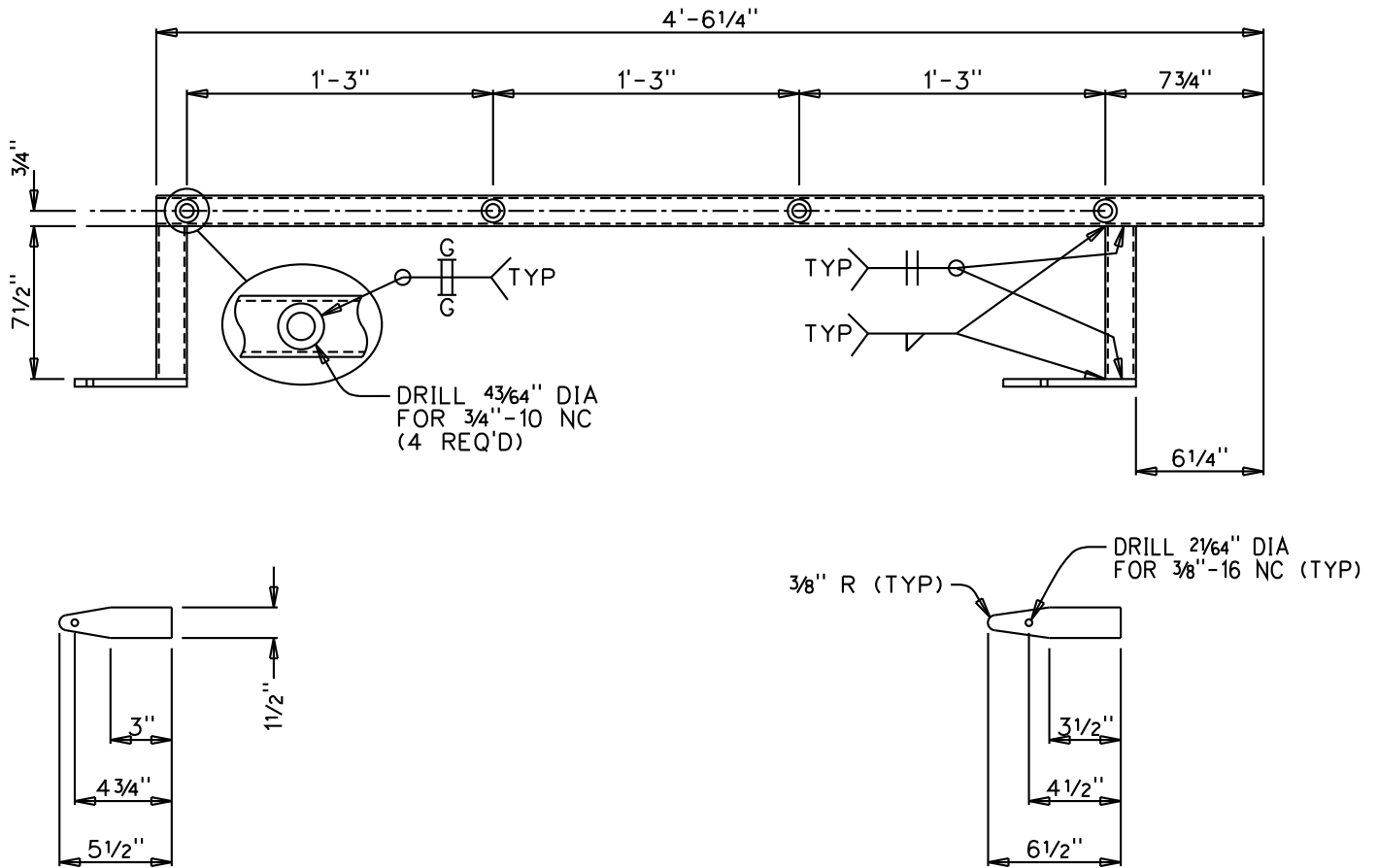
5. Shipping

Working devices shall be shipped assembled, one Cat. ID per pallet. Pallets may be stacked and banded together.

6. Drawings

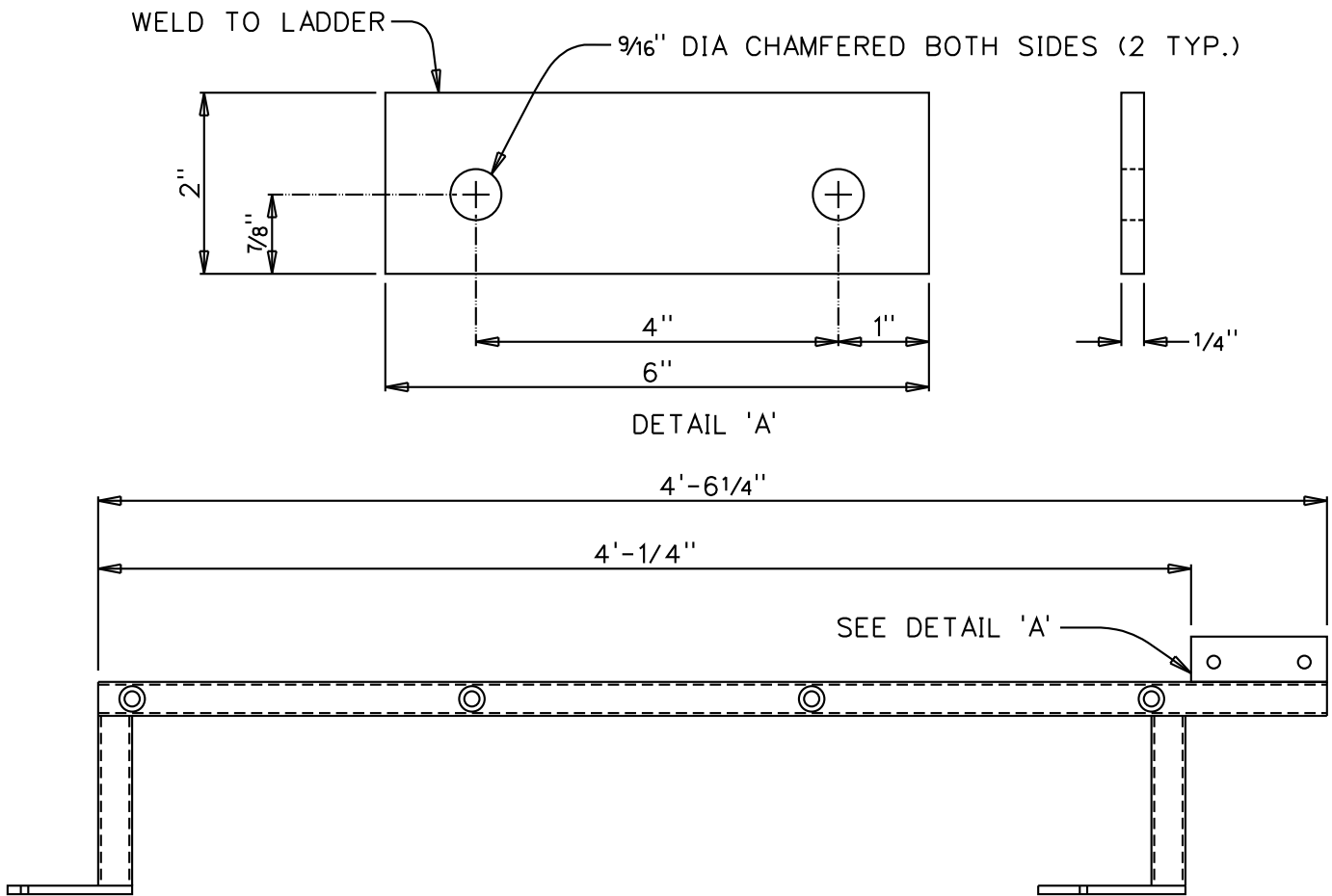
Working devices shall be dimensioned, drilled, and welded to the specifications of the following drawings.

6.1 MID 741266 - Working Device for Steel Structure



Item	Description	Steel Grade	Qty
A	1 1/2" STR Hollow Tubing x 11 Ga x 4'-6 1/4" Long	C-1015	1
B	1 1/2" STR Hollow Tubing x 11 Ga x 7 1/2" Long	C-1015	2
C	1 1/2" x 3/8" x 6 1/2" Long	A-572	1
D	1 1/2" x 3/8" x 5 1/2" Long	A-572	1
E	1 1/8" Dia Tubing x 7/32" Wall x 1 1/2"	A-7	4
F	3/8" Sq HD Bolt x 3/4" Long	A-307	2
G	Climbing/Working Step, 3/4" Dia x 5 11/16" Long	A-325	8

6.2 MID 741274 - Working Device w/ Fall Restraint System Top or Bottom Bracket



6.3 MID 741282 - Working Device w/ Fall Restraint System Cable Guide

